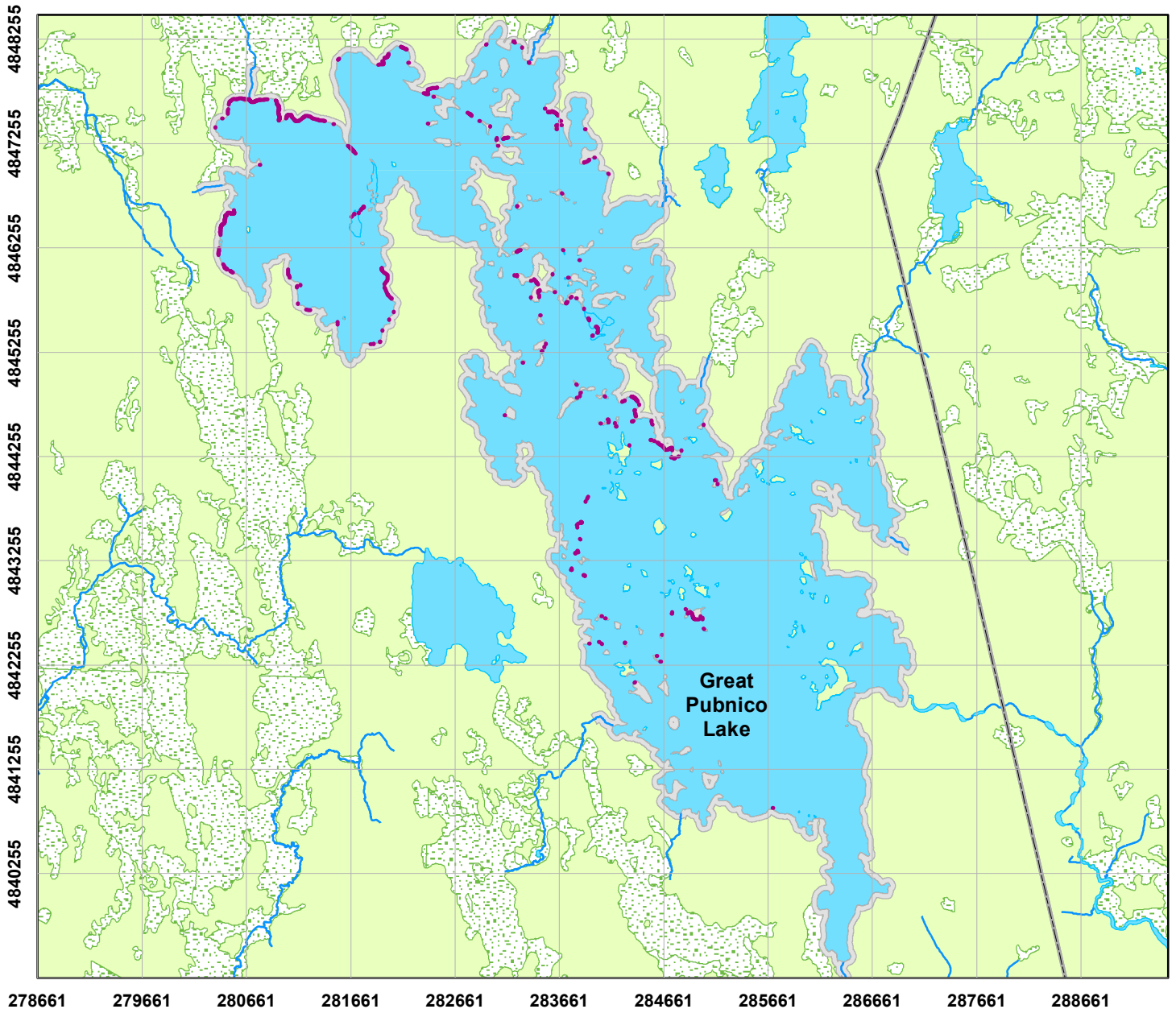





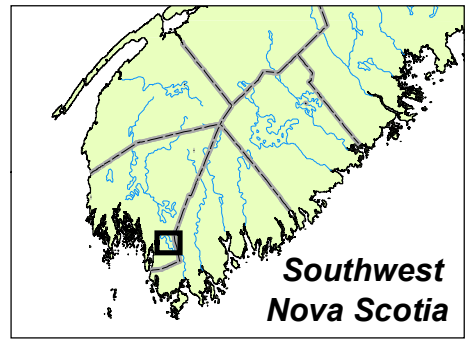


# Atlantic Coastal Plain Flora Species at Risk Great Pubnico Lake (2010 to 2012 surveys)



- Legend**
-  Species at Risk
  -  Shoreline surveyed
  -  Water
  -  Wetlands
  -  County Lines

- Species present**
- Species at risk  
 Long's Bulrush (*Scirpus longii*)  
 Tubercled Spike-rush (*Eleocharis tuberculosa*)



**Species at risk** are listed under legislation (Species At Risk Act and/or Nova Scotia Endangered Species Act). This map shows only the current distribution of species at risk as identified during surveys from 2010 to 2012 and does not take into account potential habitat that is currently unoccupied, but may become occupied in the future.